



## Bureau of Land Management

### Notice of Temporary Closure Order

**OFFICE:** Red Rock/Sloan Field Office/ Southern Nevada District Office/Nevada

**ACTION:** Temporary Closure

**SUMMARY:** The Bureau of Land Management Red Rock/Sloan Field Office announces the temporary closure of certain public lands under its administration from November 12, 2024, to November 11, 2026, during construction of the Sloan Canyon National Conservation Area Visitor Contact Station. This action is taken to minimize risk to the public during construction.

The temporary closure is located within Sloan Canyon National Conservation Area on approximately 50 acres of public lands. The temporary closure includes Nawghaw Poa Road and the construction footprint for the new building for the duration of the two-year closure. The construction footprint includes the current trail head for the Petroglyph Canyon Trail and part of the 101 Trail. Access to these trails will be rerouted for the duration of construction.

The temporary closure also includes a six-to-nine-month closure of the pedestrian path that parallels Nawghaw Poa Road during trenching activities for the water and sewer lines. Those activities are currently scheduled to begin in January of 2025.

The following restrictions will be in effect for the duration of the closure. Unless otherwise authorized, the following activities within the closure area are prohibited:

- Public access to the closure area.
- Public use of Nawghaw Poa Road.
- Public use of the pedestrian path parallel to Nawghaw Poa Road during utility installation.
- Parking any vehicle in violation of posted restrictions, or in such a manner as to obstruct or impede normal or emergency traffic movement or the parking of other vehicles, create a safety hazard, or endanger any person, property, or feature. Vehicles so parked will be subject to citation, removal, and impoundment at the owner's expense.
- Operating a vehicle through, around, or beyond a restrictive sign, recognizable barricade, fence, or traffic control barrier or device.

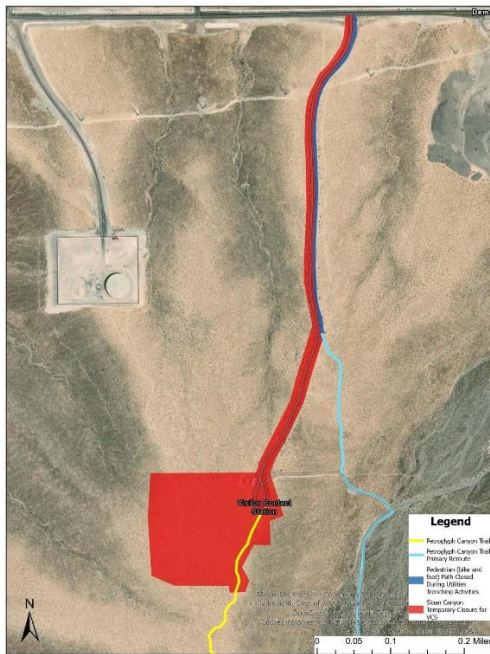
**RATIONALE:** Authority for closure of public lands is found in 43 CFR 8340 subpart 8341, 43 CFR 8360 subpart 8364.1, and 43 CFR 2932.

**EXEMPTIONS:** The above restrictions do not apply to emergency vehicles and vehicles owned by the United States, the State of Nevada, or Clark County. Vehicles under permit for operation by event participants must follow the event permit stipulations.

*This order does not apply to Federal, State, and local officers and employees in the performance of their official duties; members of organized rescue or firefighting forces in the performance of their official duties; and persons with written authorization from the BLM.*

*This order does not apply to activities conducted under contract with the BLM, agency personnel monitoring the event, or activities conducted under an approved plan of operations. Authorized users must have in their possession a written permit or contract from the BLM, signed by the authorized officer.*

**LOCATION:** Approximately 50 acres of public lands in Sloan Canyon National Conservation Area, including Nawghaw Poa road and the construction area footprint.



**DATES:** November 12, 2024 – November 11, 2026

**NOTIFICATION METHODS AND POSTED LOCATIONS:**

<https://www.blm.gov/announcement/blm-announces-temporary-closure-certain-public-lands-sloan-canyon-nca-during>

Posted on the Sloan Canyon National Conservation Area website at:

<https://www.blm.gov/programs/national-conservation-lands/nevada/sloan-canyon-nca>

Also posted at various trailhead locations around the NCA.

**ENFORCEMENT AND PENALTIES** (Generic language, if appropriate): *Any person who violates the temporary closures or restrictions in this order may be tried before a United States magistrate and fined in accordance with [18 U.S.C. 3571](#), imprisoned no more than 12 months under [43 U.S.C. 1733\(a\)](#) and [43 CFR 8360.0-7](#), or both. In accordance with [43 CFR 8365.1-7](#), State or local officials may also impose penalties for violations of State law.*

**FOR FURTHER INFORMATION CONTACT:** Jenna Giddens, Sloan Canyon National Conservation Area Manager, 702-515-5156, [jgiddens@blm.gov](mailto:jgiddens@blm.gov)

**APPROVED BY:** Catrina Williams, Red Rock/Sloan Field Office, Field Manager, November 6, 2024.